

# **Rheumatology Radiology Conference**

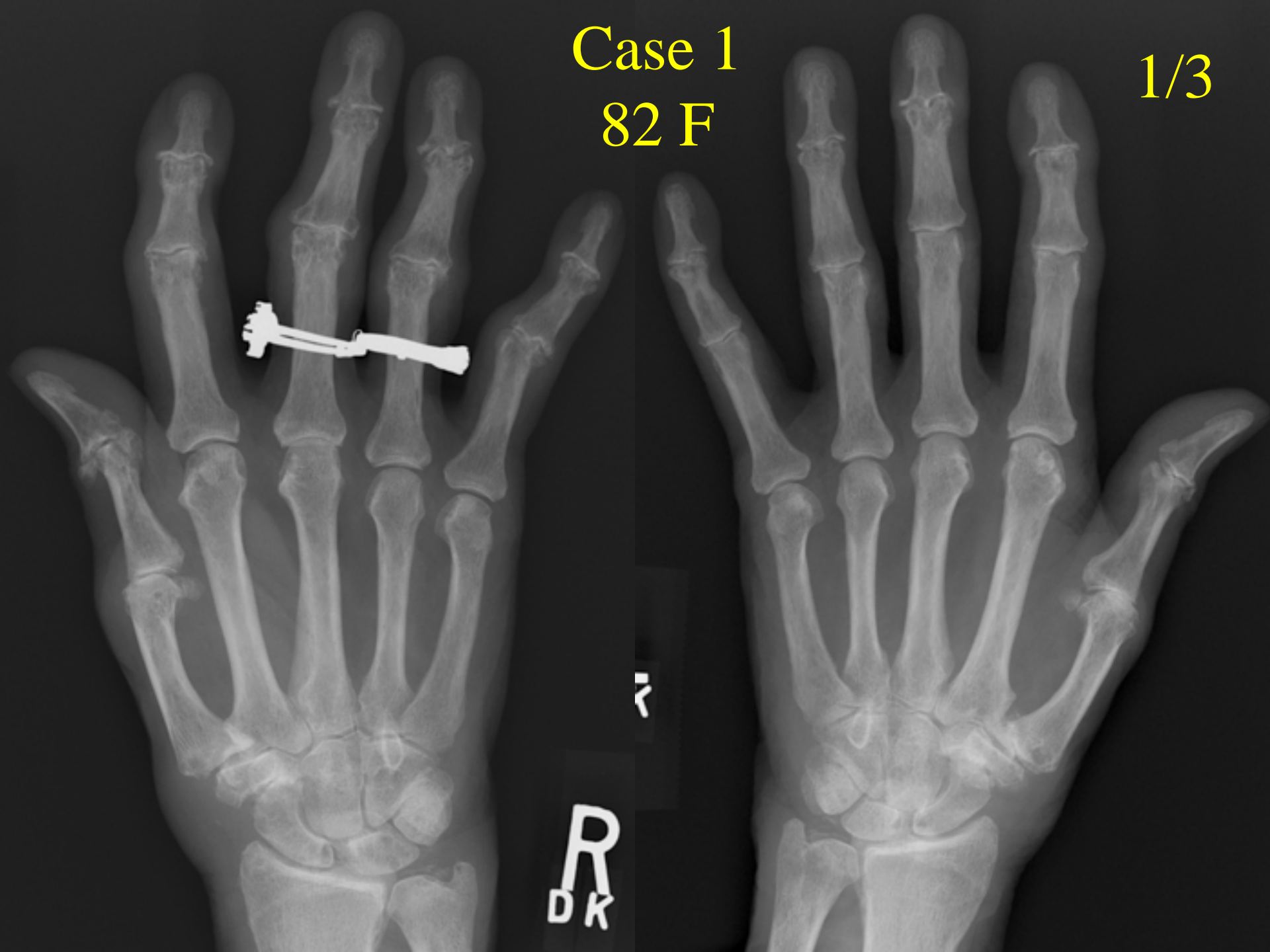
***Musculoskeletal Radiology***

***Department of Radiology***

***University of Iowa Hospitals and Clinics***

Case 1  
82 F

1/3



R  
DK

Case 1  
82 F

2/3



Case 1  
82 F

3/3



Case 2  
43 M  
Back pain



1/2

Case 2  
43 M  
Back pain

2/2



Case 3

41 F

1/2



Case 3  
41 F

2/2





**Case 4**  
**74 F foot pain**





**Case 5**  
**45 M pain, swelling**

Case 6  
18-y-o man  
Back pain



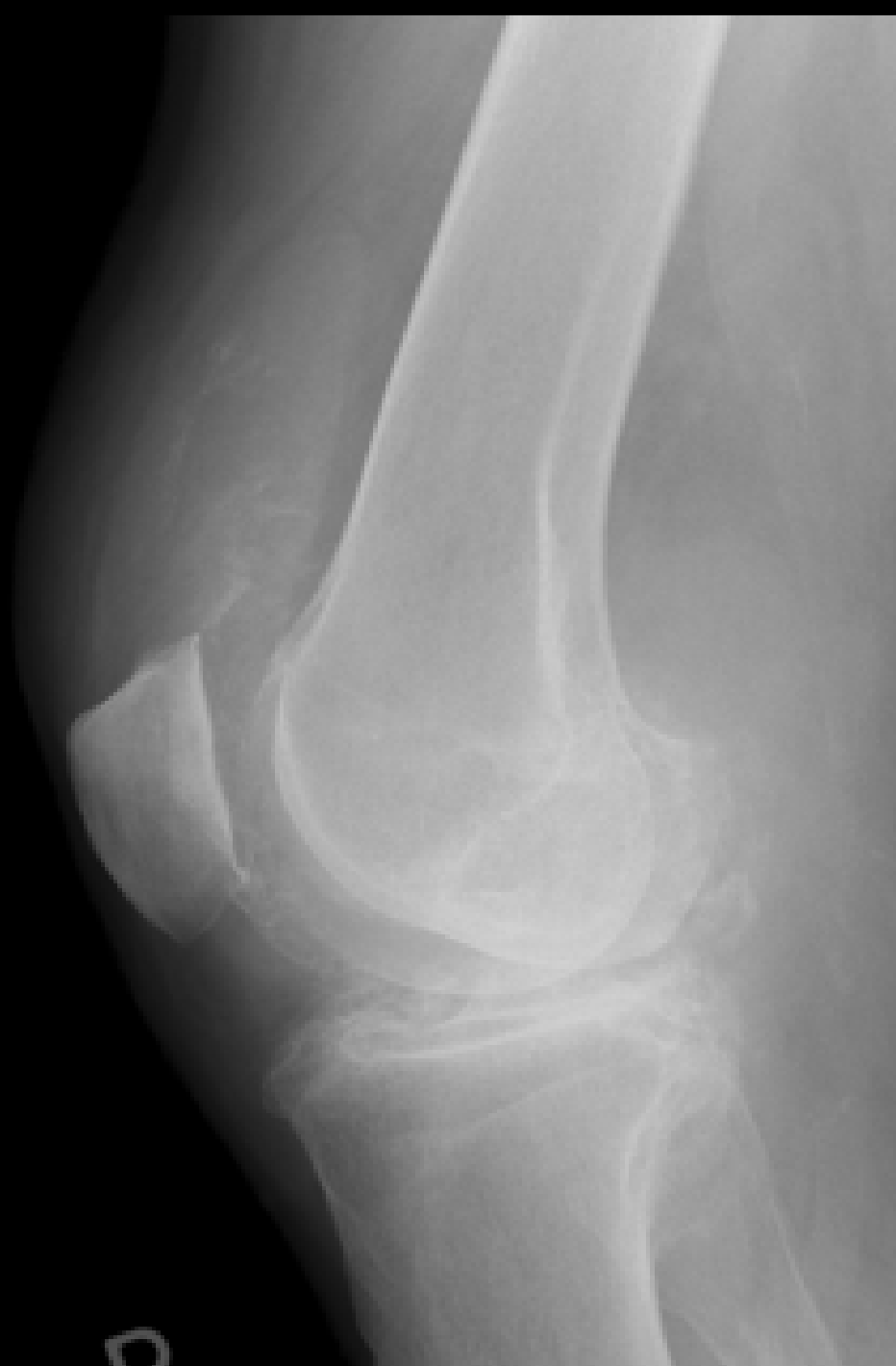
Case 7  
63 man  
Knee pain

1/2



Case 7  
63 man  
Knee pain

2/2



Case 8  
Polyarthralgia  
46 man



1/2

Case 8

Polyarthralgia

46 man

2/2



BOTH HANDS PA, LATERAL  
C: PA  
0203691  
L15

# Case 9

348 man

1/2





Case 9  
48 man

2/2



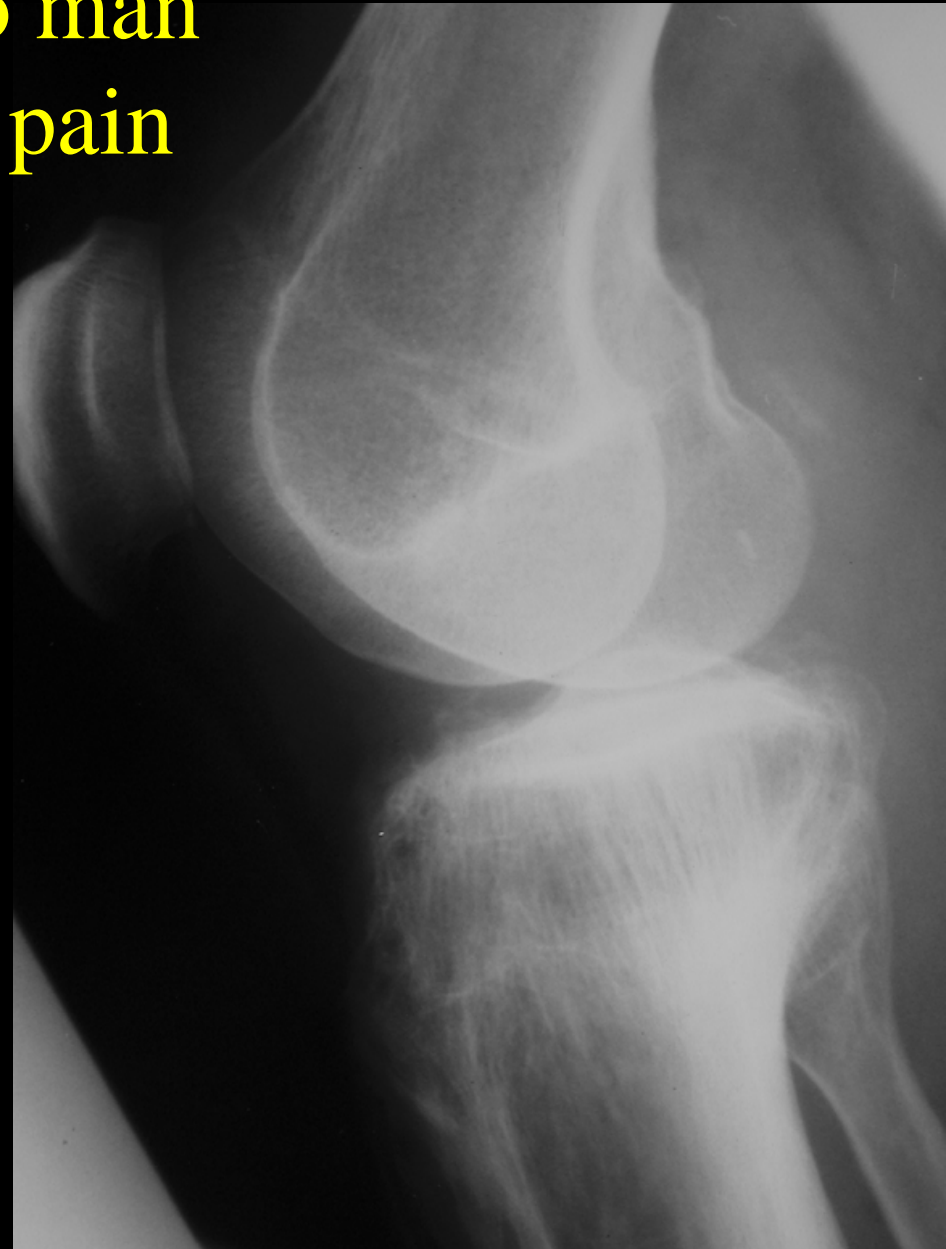
Case 10  
14 y-o girl  
Ankle pain



# Case 11

90-y-o man

Knee pain



Case 12  
35-y-o man  
Ankle pain

